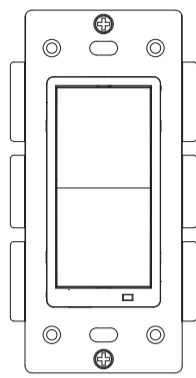


**ZOOZ™**  
bright ideas

S2 ON/OFF SWITCH  
ZEN26



www.getzooz.com  
ask@getzooz.com



FEATURES

- Manual or Z-Wave on/off control with instant status updates
- **Simple Direct 3-Way:** connect with existing on/off switches in 3-way, 4-way, and 5-way set-ups, no add-on needed (neutral wire required)
- Remembers and restores on/off status after power failure
- LED indicator signals inclusion, exclusion, reset, and setting changes
- Built-in Z-Wave Plus signal repeater to extend network range
- Works with LED, CFL, and incandescent bulbs
- S2 security protocol and the latest 500 Z-Wave chip for faster and safer wireless communication
- Supported by most Z-Wave controllers

SPECIFICATIONS

- Model Number: ZEN26
- Z-Wave Signal Frequency: 908.42 MHz
- Power: 120 VAC, 60 Hz
- **Maximum Load:** 8 A, 150 W LED/CFL, 600 W incandescent, 1200 W resistive
- Range: Up to 100 feet line of sight
- Operating Temperature: 32-104° F (0-40° C)
- Installation and Use: Indoor only

**CAUTION**

This is an electrical device - please use caution when installing and operating the on/off switch. Remote control of appliances may result in unintentional or automated activation of power. Do not use this Z-Wave device to control electric heaters or other appliances which produce the risk of fire, burns, or electrical shock when unattended. To reduce risk of overheating and possible damage to other equipment, do not install this unit to control a receptacle; a motor-operated appliance; a fluorescent lighting fixture; or a transformer-supplied fixture.

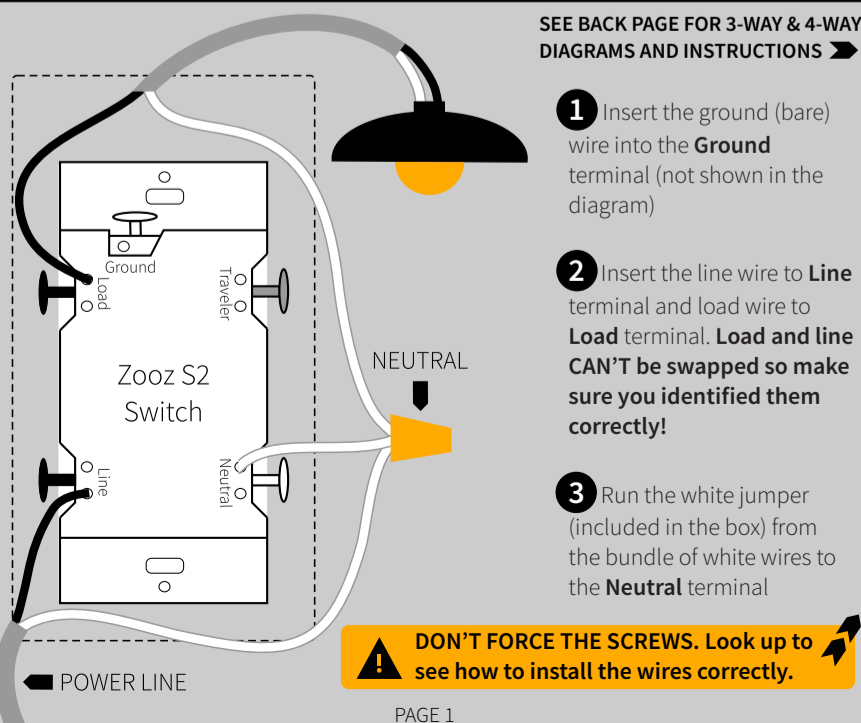
**BEFORE YOU INSTALL**

This switch is intended for installation in accordance with the National Electric Code and local regulations. It is recommended that a licensed electrician perform this installation.

WIRING: READ IT!

1. **CHECK THE LOAD:** lights only (150W for LED's/CFL's, 600W for incandescent), DON'T CONNECT THIS SWITCH TO FANS.
  2. **POWER OFF:** turn the circuit power off in the breaker panel before you start. If installing in a multi-switch box with multiple circuits, turn power off at all of the circuits.
  3. **CHECK THE WIRES:** mark load (most often black), line (most often black), neutral (most often white), and ground (most often bare). 14AWG wires only! Don't rely exclusively on your multimeter to identify the wires!
- Not sure what you're seeing?  
We'll help: support.getzooz.com
4. **REMOVE THE OLD SWITCH:** disconnect the wires and label them.
  5. **CONNECT THE Z-WAVE SWITCH:** follow all installation steps carefully. Wire the switch EXACTLY like in the diagram.

ZEN26 WIRING DIAGRAM FOR SINGLE POLE INSTALLATION



1. **UNSCREW:** carefully turn the screw counter clockwise to make space for the wire. DO NOT unscrew completely.
2. **PRESS DOWN:** once it's loose, press the screw down with your finger so it catches the thread.
3. **INSERT WIRE:** make sure the wire is perfectly straight, then insert it into the terminal while holding the screw down. DO NOT wrap wires around the terminal screws!
4. **TIGHTEN:** turn the screw clockwise to tighten the wire. DO NOT OVERTIGHTEN!

COMPLETE INSTALLATION

Secure your Z-Wave switch in the box with mounting screws, handling the wires with care. For **multi-gang-box installations**, you may need to break the side tabs off with pliers to fit the switch next to the neighboring switches. Install the wall plate and restore power to the circuit.

TEST THE SWITCH

The LED indicator should light up as soon as you turn the power back on if the switch (light) is OFF. Tap the upper paddle for ON and lower paddle for OFF. **If the test fails, please check that:**

- power is fully restored to the circuit
- wiring matches the instructions **exactly**
- the type of load is approved and within the specs of this switch

WARNING

- This product should be installed indoors upon completion of any building renovations.
- Prior to installation, the device should be stored in a dry, dust-and-mold-proof place.
- Do not install the switch in a place with direct sun exposure, high temperature, or humidity.
- Keep away from chemicals, water, and dust.
- Ensure the device is never close to any heat source or open flame to prevent fire.
- Ensure the device is connected to an electric power source that does not exceed the maximum load power.
- No part of the device may be replaced or repaired by the user.

Z-WAVE CONTROL

1. **ADD DEVICE** to your hub  
Initiate inclusion (pairing) in the app (or web interface). Not sure how? Get step-by-step instructions for adding the switch to **SmartThings, Vera, Wink** and other hubs here: [www.support.getzooz.com](http://www.support.getzooz.com)
2. Finalize inclusion at the switch. **TAP 3 TIMES QUICKLY**  
The LED indicator will blink to signal communication and remain on for 2 seconds to confirm inclusion.

NEED SOME HELP? [ask@getzooz.com](mailto:ask@getzooz.com)

TROUBLESHOOTING

- The switch won't add to your system? Try this:**
1. Initiate **EXCLUSION** and tap the lower paddle 3 times quickly.
  2. Tap the upper paddle **4-5 times quickly** when adding it.
  3. Bring the gateway controller (hub) **closer** to the switch, it may be out of range.
  4. Get troubleshooting tips for your hub at [www.support.getzooz.com](http://www.support.getzooz.com)

EXCLUSION (REMOVING / UNPAIRING DEVICE)

1. Bring your Z-Wave gateway (hub) close to the switch if possible
2. Put the Z-Wave hub into **exclusion mode** (not sure how to do that? [ask@getzooz.com](mailto:ask@getzooz.com))
3. Tap the **lower paddle** on the switch **3 times quickly**
4. Your hub will confirm exclusion and the device will disappear from your controller's device list

FACTORY RESET

If your primary controller is missing or inoperable, you may need to reset the device to factory settings. To complete the reset process manually, **tap-tap-tap'n'hold the upper paddle** for at least 10 seconds. The LED indicator will flash to confirm successful reset.  
**NOTE: All previously recorded activity and custom settings will be erased from the device's memory.**



This product can be included and operated in any Z-Wave network with other Z-Wave certified devices from other manufacturers and/or other applications. All non-battery operated nodes within the network will act as repeaters regardless of vendor to increase reliability of the network. This product features the latest Security 2 (S2) framework to remove smart home network hacking risks. This device is equipped with a unique authentication code for trusted wireless communication. **This is an ETL certified device.** ETL, just like UL, is a Nationally Recognized Testing Laboratory. The ETL mark is proof of product compliance with North American safety standards.

Please refer to your controller's user guide for advanced programming instructions as they are a little different for every software. **Not sure where to start? Go to [www.support.getzooz.com](http://www.support.getzooz.com) for detailed instructions on how to change the settings on SmartThings, Vera, and more.** Or just email us: [ask@getzooz.com](mailto:ask@getzooz.com)

ASSOCIATION

This on/off switch supports Group 1 with up to 1 devices for lifeline communication and Group 2 with up to 5 devices. This device will send BINARY SWITCH REPORT to Group 1 and 2 when operated manually.

CUSTOMIZE YOUR SWITCH

Paddle Control

**Parameter 1:** Choose if you want the upper paddle to turn the light on or turn the light off when tapped  
**Values:** 0 – Upper paddle turns the light on, lower paddle turns the light off (default); 1 – Upper paddle turns the light off, lower paddle turns the light on  
**Size:** 1 byte dec.

LED Indicator Control

**Parameter 2:** Choose if you want the LED indicator to turn on when the switch (light) is on or off, or if you want it to remain on or off at all times  
**Values:** 0 – LED indicator is on when switch is off, LED indicator is off when switch is on (default); 1 – LED indicator is on when switch is on, LED indicator is off when switch is off; 2 – LED indicator is always ON  
**Size:** 1 byte dec.

OR:

6 x TAP PADDLE to change LED indicator mode

Auto Turn-Off Timer

**Parameter 3:** Use this parameter to set the time after which you want the switch to automatically turn off once it has been turned on. The number entered as value corresponds to the number of seconds.  
**Values:** 0 – timer disabled (default); 1 – 32768 (seconds).  
**Size:** 2 byte dec.

On Off Status After Power Failure

**Parameter 5:** Set the on off status for the switch after power failure.  
**Values:** 0 – forced to OFF (regardless of state prior to power outage); 1 – forced to ON (regardless of state prior to power outage); 2 – remembers and restores on/off status after power failure (default)  
**Size:** 1 byte dec.

This device requires the following **command classes** to be supported and recognized by your Z-Wave controller:

COMMAND\_CLASS\_ZWAVEPLUS\_INFO  
COMMAND\_CLASS\_SWITCH\_BINARY  
COMMAND\_CLASS\_ASSOCIATION  
COMMAND\_CLASS\_MULTI\_CHANNEL\_ASSOCIATION  
COMMAND\_CLASS\_ASSOCIATION\_GRP\_INFO  
COMMAND\_CLASS\_TRANSPORT\_SERVICE  
COMMAND\_CLASS\_VERSION  
COMMAND\_CLASS\_MANUFACTURER\_SPECIFIC  
COMMAND\_CLASS\_DEVICE\_RESET\_LOCALLY  
COMMAND\_CLASS\_POWERLEVEL  
COMMAND\_CLASS\_CONFIGURATION  
COMMAND\_CLASS\_SECURITY\_2  
COMMAND\_CLASS\_SUPERVISION  
COMMAND\_CLASS\_FIRMWARE\_UPDATE\_MD

WARRANTY

This product is covered under a 12-month limited warranty. To read the full warranty policy or file a warranty claim, please go to [www.getzooz.com/warranty](http://www.getzooz.com/warranty)

IN NO EVENT SHALL ZOOZ OR ITS SUBSIDIARIES AND AFFILIATES BE LIABLE FOR ANY INDIRECT, INCIDENTAL, PUNITIVE, SPECIAL, OR CONSEQUENTIAL DAMAGES, OR DAMAGES FOR LOSS OF PROFITS, REVENUE, OR USE INCURRED BY CUSTOMER OR ANY THIRD PARTY, WHETHER IN AN ACTION IN CONTRACT, OR OTHERWISE EVEN IF ADVISED OF THE POSSIBILITY OF SUCH DAMAGES. ZOOZ'S LIABILITY AND CUSTOMER'S EXCLUSIVE REMEDY FOR ANY CAUSE OF ACTION ARISING IN CONNECTION WITH THIS AGREEMENT OR THE SALE OR USE OF THE PRODUCTS, WHETHER BASED ON NEGLIGENCE, STRICT LIABILITY, BREACH OF WARRANTY, BREACH OF AGREEMENT, OR EQUITABLE PRINCIPLES, IS EXPRESSLY LIMITED TO, AT ZOOZ'S OPTION, REPLACEMENT OF, OR REPAYMENT OF THE PURCHASE PRICE FOR THAT PORTION OF PRODUCTS WITH RESPECT TO WHICH DAMAGES ARE CLAIMED. ALL CLAIMS OF ANY KIND ARISING IN CONNECTION WITH THIS AGREEMENT OR THE SALE OR USE OF PRODUCTS SHALL BE DEEMED WAIVED UNLESS MADE IN WRITING WITHIN THIRTY (30) DAYS FROM ZOOZ'S DELIVERY, OR THE DATE FIXED FOR DELIVERY IN THE EVENT OF NONDELIVERY.

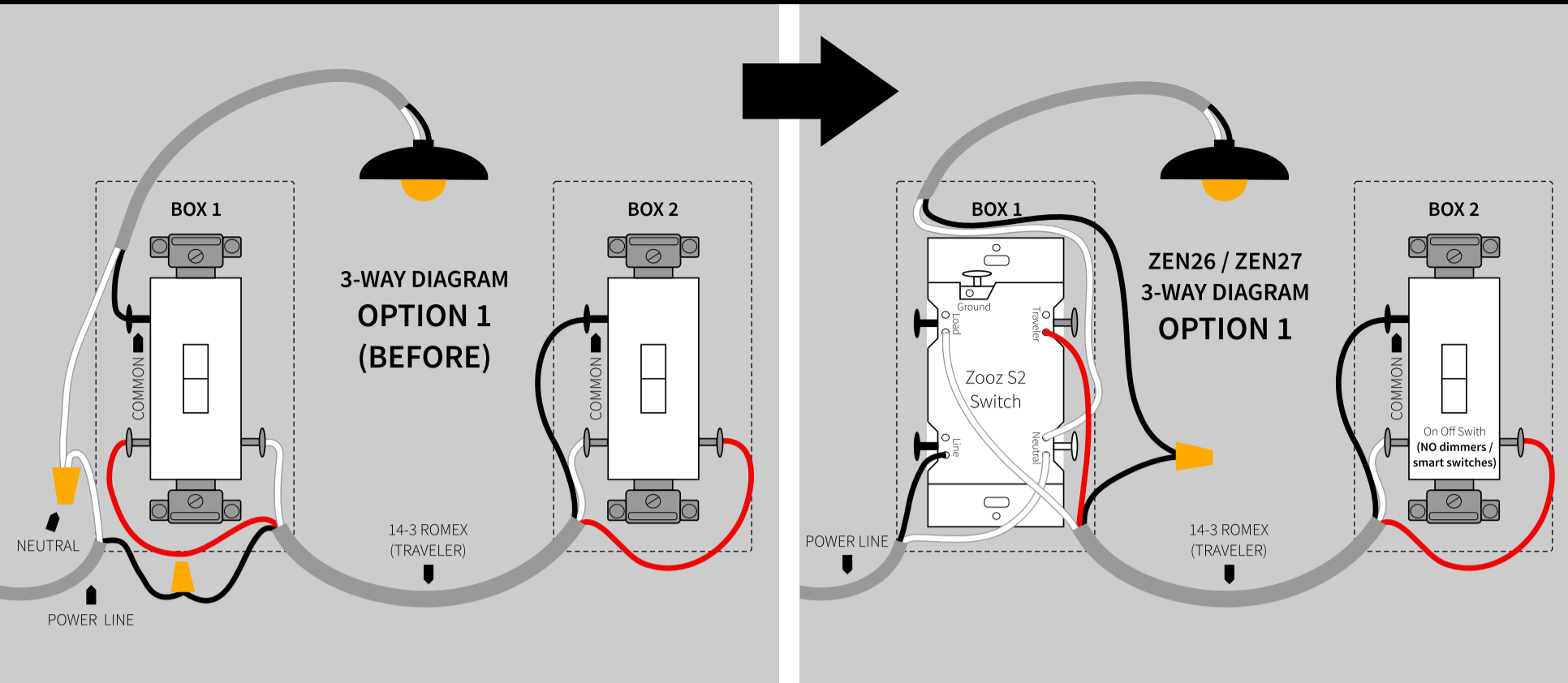
FCC NOTE  
THE MANUFACTURER IS NOT RESPONSIBLE FOR ANY RADIO OR TV INTERFERENCE CAUSED BY UNAUTHORIZED MODIFICATIONS TO THIS EQUIPMENT. SUCH MODIFICATIONS COULD VOID THE USER'S AUTHORITY TO OPERATE THE EQUIPMENT. STORE INDOORS WHEN NOT IN USE. SUITABLE FOR DRY LOCATIONS ONLY. DO NOT IMMERSE IN WATER. NOT FOR USE WHERE DIRECTLY EXPOSED TO WATER.

This device complies with Part 15 of the FCC Rules. Operation is subject to the following conditions:  
1. This device may not cause harmful interference,  
2. This device must accept any interference received, including interference that may cause undesired operation.  
This equipment has been tested and found to comply with the limits for a Class B digital device, pursuant to part 15 of the FCC Rules. These limits are designed to provide reasonable protection against harmful interference in a residential installation. This equipment generates, uses and can radiate radio frequency energy and, if not installed and used according to instructions, may cause harmful interference to radio communications. However, there is no guarantee that interference will not occur in any given installation. If this equipment causes harmful interference to radio or television reception, the user may try to correct the interference by taking one or more of the following measures:  
- Reorient or relocate receiving antenna  
- Increase the separation between equipment and receiver  
- Connect equipment into a separate outlet or circuit from receiver  
- Consult the dealer or an experienced radio/TV technician for additional assistance

All brand names displayed are trademarks of their respective holders.  
© Zooz 2018

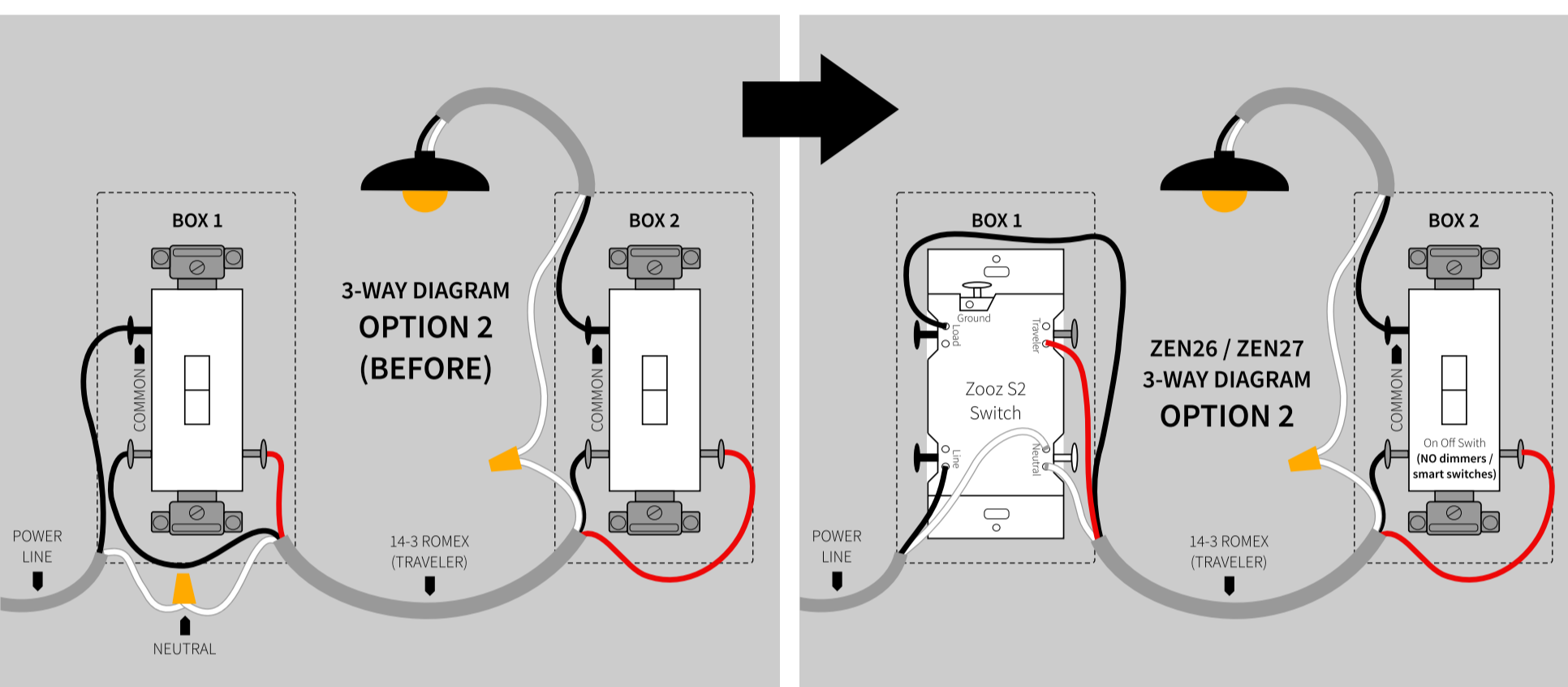
# ZEN26 WIRING DIAGRAMS FOR THE MOST COMMON 3-WAY INSTALLATIONS

For more diagrams or to request custom instructions go to [support.getzooz.com](http://support.getzooz.com)



**STOP!**  
Wire and screw position, as well as color codes are for illustration only. You should not follow the colors and positioning in the illustration blindly. Always identify all wires prior to installing Zooz switches and make sure you can match the diagrams to your set-up exactly. Don't experiment or attempt a "trial-and-error" installation for your own safety.

**NOTE!**  
If you are not comfortable identifying the wiring and completing the installation, please consult a licensed electrician. Make sure you have identified all wiring correctly before connecting the switch. If your wiring doesn't match any of the below diagrams, contact our support: [ask@getzooz.com](mailto:ask@getzooz.com)

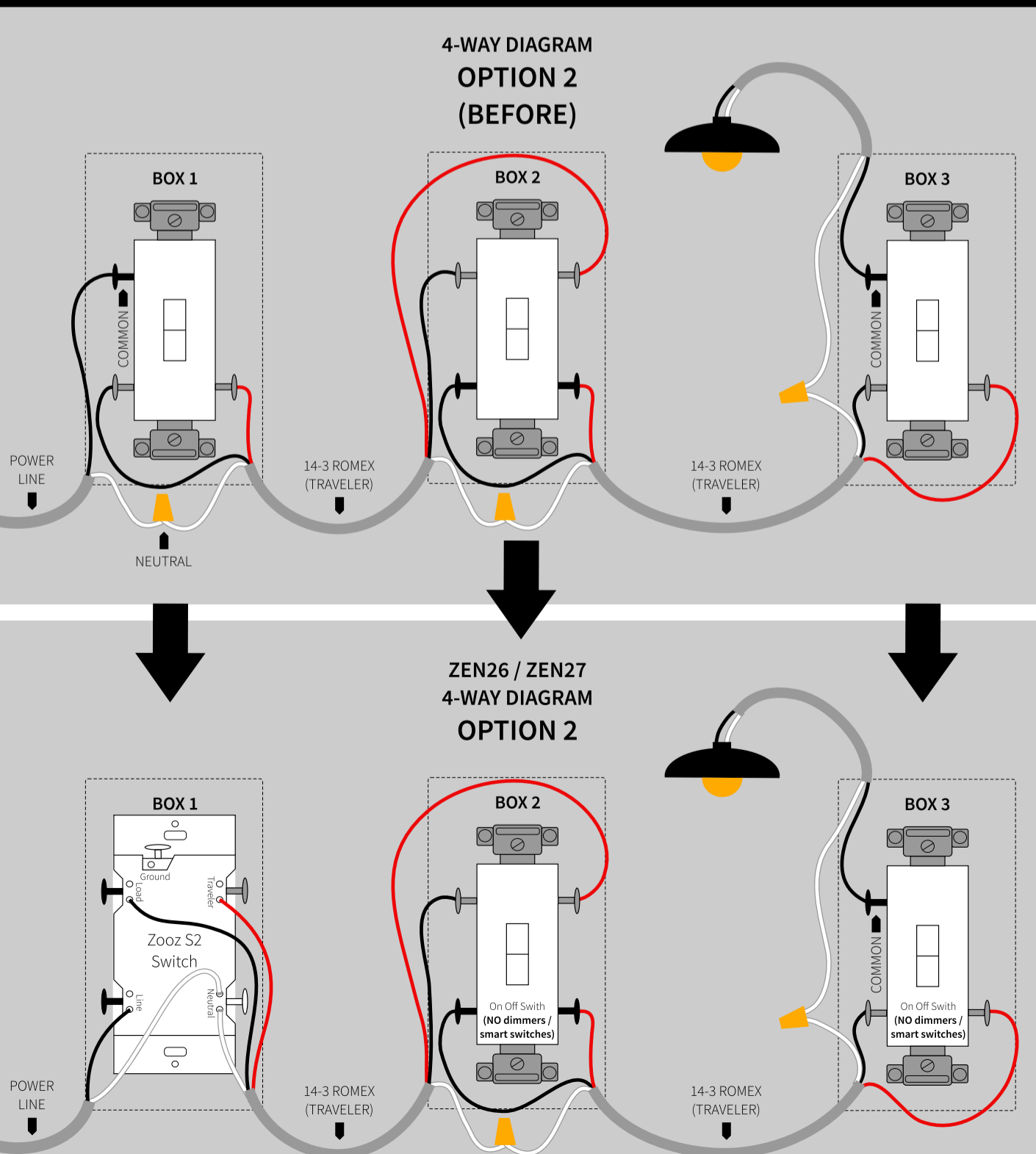


**⚠️ ON/OFF SWITCHES ONLY**  
Do not connect Zooz Z-Wave switches to an existing 3-way dimmer or an electronic add-on switch. Zooz switches can only be wired with mechanical on/off switches in a 3-way or 4-way setting!  
To simplify the diagrams, we did not include connections for the ground wire. Remember that all Zooz switches need to be wired according to the electrical code, with ground wire connected to the ground terminal.

**Always install your Zooz S2 switch in the box with direct connection to power line. Diagrams and instructions in this manual are for ZEN26 and ZEN27 models ONLY!**

# ZEN26 WIRING DIAGRAM FOR THE MOST COMMON 4-WAY INSTALLATION

For more diagrams or to request custom instructions go to [support.getzooz.com](http://support.getzooz.com)



## NEED HELP?

If you're having trouble reading the diagrams or don't see your wiring set-up here, get in touch! We have **more 3-way, 4-way, and 5-way diagrams** and instructions. There are many ways to wire multi-point control set-ups so unless you can match your wiring to the diagrams here, please don't attempt the installation for your own safety.

[www.support.getzooz.com](http://www.support.getzooz.com)  
[ask@getzooz.com](mailto:ask@getzooz.com)