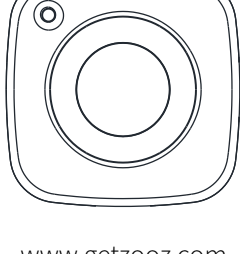




4-IN-1 SENSOR

ZSE40 VER. 2.0



www.getzooz.com



FEATURES

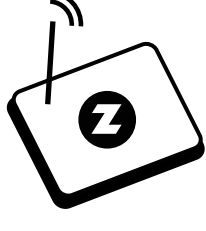
- 4 smart sensors in 1 compact device
- 7 levels of motion sensitivity
- 4 modes for motion / temperature LED indicator notifications
- Built-in tamper protection
- Low battery alerts
- Z-Wave Plus + 500 chip more range and longer battery life
- AES encryption (security-enabled hub required for best performance)

SPECIFICATIONS

- Model Number: ZSE40 VER. 2.0
- Z-Wave Signal Frequency: 908.42 MHz
- Power: 1 CR123A battery
- Range: Up to 100 feet line of sight
- Operating Temperature: 5-104° F
- Installation and Use: Indoor only

Z-WAVE CONTROL

1. Insert the battery.
2. Place the sensor near the location where it will be mounted.

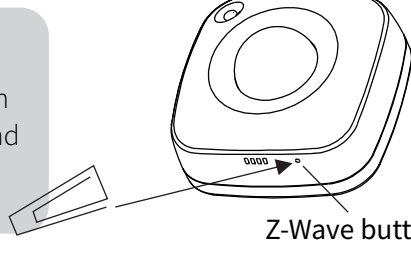


3. ADD DEVICE to your hub

Initiate inclusion (pairing) in the app (or web interface). Not sure how? Get step-by-step instructions for adding the sensor to **SmartThings**, **Vera**, and other hubs here: [www.support.getzooz.com](http://www.support.getzooz.com)

4. Finalize inclusion at the sensor. CLICK Z-WAVE BUTTON TWICE QUICKLY

Use a paperclip (included in the box) to access the Z-Wave button for inclusion, exclusion, reset, and manual wake-up.



Z-Wave button

5. The LED indicator will flash 5 times (color depends on room temperature, it's usually blue or yellow) to signal communication and then turn off to confirm inclusion. If the sensor flashes once only, try factory reset and go to Step 1. If the sensor doesn't flash at all, try pressing the button more firmly.

TROUBLESHOOTING

The sensor won't add to your system? Try this:

1. Initiate **EXCLUSION** and click the Z-Wave button on the sensor twice.
2. Make sure the battery **cover is closed** tightly when adding the sensor.
3. Click the Z-Wave button on the sensor **6-7 times quickly** when adding it.
4. Bring the sensor **closer** to your hub, it may be out of range.
5. Double-check if the **battery** is inserted correctly.
6. Get troubleshooting tips for your hub at [www.support.getzooz.com](http://www.support.getzooz.com)

EXCLUSION (REMOVING / UNPAIRING DEVICE)

1. Bring the sensor within direct range of your Z-Wave gateway (hub).
2. Put the Z-Wave hub into exclusion mode (not sure how to do that? ask@getzooz.com).
3. Press and release the Z-Wave button with a paperclip twice quickly.
4. Your hub will confirm exclusion and the device will disappear from your controller's device list.

FACTORY RESET

If your primary controller is missing or inoperable, you may need to reset the device to factory settings. To complete the reset process manually, **OPEN the back cover** to trigger tamper switch. **Press and release the Z-Wave button** using a paperclip **10 TIMES quickly** (within 10 seconds). The sensor will start flashing immediately and will again flash 5 times after the 10 clicks (color depends on room temperature, it's usually blue or yellow).

**NOTE: All previously recorded activity and custom settings will be erased from the device's memory.**

WAKE-UP MODE

The sensor's wake-up interval is set to 12 hours by default to save battery life. You can change the wake-up interval using your controller's advanced settings if available.

During wake-up, the sensor receives communication from the hub (setting updates or network information). Long wake-up interval will **not** affect how often the sensor reports motion and other values to your hub.

MANUAL WAKE-UP

Press and release the Z-Wave button **once** to wake the device up. The LED indicator will flash once (blue or orange).

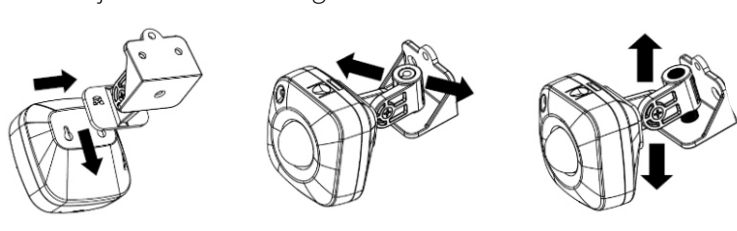
You may need to wake the sensor up manually IF:

1. It doesn't fully configure during set-up (values are not displayed or errors pop up in your hub's interface).
2. You change advanced settings for the sensor and want them to update.

MOUNTING

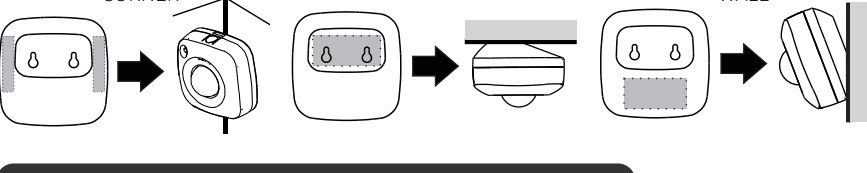
OPTION 1: MOUNTING BRACKET

Use the 2 screws included in the box to fix the mounting bracket to flat surface of your choice - at least 7 feet above the ground for best results. Once the bracket is securely installed, carefully slide the 4-in-1 sensor onto the bracket and position it by tilting it to either side, upwards, or downwards - just like in the images below.



OPTION 2: ADHESIVE TAPE

Use the supplied adhesive tape to fix the sensor to a CLEAN flat surface of your choice. Apply the tape as in the pictures below.



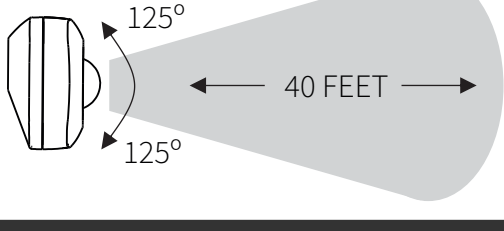
⚠ INDOOR ONLY!

This sensor may only be used and installed indoors. Outdoor installation will void its warranty.

For best results, mount the sensor within 30 feet from the door and around 7 feet from the ground. The 4-in-1 Sensor will detect motion up to 40 feet depending on mounting location and sensitivity settings.

MOTION DETECTION RANGE

See **Advanced Settings** for ways to optimize and customize motion detection and activity reports.



⚠ WARNING

- This product should be installed indoors upon completion of any building renovations.
- Prior to installation, the device should be stored in a dry, dust-and-mold-proof place.
- Do not install the sensor in a place with direct sun exposure, high temperature, or humidity.
- Keep away from chemicals, water, and dust.
- Ensure the device is never close to any heat source or open flame to prevent fire.
- Ensure the device is connected to an electric power source that does not exceed the maximum load power.
- No part of the device may be replaced or repaired by the user, except for the battery.

## ADVANCED SETTINGS

Please refer to your controller's user guide for advanced programming instructions as they are a little different for every software.

**Not sure where to start? Go to [www.support.getzooz.com](http://www.support.getzooz.com) for detailed instructions how to change the settings on SmartThings, Vera, and more.** Or just email us: [ask@getzooz.com](mailto:ask@getzooz.com)

### ASSOCIATION

Associate your 4-in-1 with other Z-Wave devices for direct communication between them so your rules and automations can take place even if the hub is down.

The 4-in-1 sensor supports Group 1 with up to five devices for lifeline communication. To associate the sensor with other devices, simply put your Z-Wave controller in Association mode by sending the appropriate command and wake up the sensor by clicking the Z-Wave button with a paperclip once (the LED indicator will flash once).

### CUSTOMIZE YOUR SENSOR

#### Temperature Sensor

**Parameter 1:** Use this parameter to switch from Fahrenheit to Celsius scale.

**Values:** 0 – Celsius. 1 – Fahrenheit (default).

**Size:** 1 byte dec.

**Parameter 2:** Use it to set temperature change to be reported by the sensor.

**Values:** 1 - 50 (where 1 stands for 0.1 degree C and 50 stands for 5 degrees).

Default set to 1 degree (value 10). The sensor will report new temperature value to the controller whenever temperature goes 1 degree up or down.

**Size:** 1 byte dec.

#### Humidity Sensor

Reports relative humidity.

**Parameter 3:** Use it to set humidity percentage change to be reported by the sensor.

**Values:** 1 - 50 where 1 stands for 1% and 50 stands for 50%. Default set to 10%.

**Size:** 1 byte dec.

#### Light Sensor

Reports light level in percentage (1-100).

**Parameter 4:** Use it to choose light percentage change to be reported by the sensor.

**Values:** 5 - 50 where 5 stands for 5% and 50 stands for 50%. Default set to 10%.

**Size:** 1 byte dec.

#### Motion Sensor

**Parameter 5:** Use it to set trigger interval - the time when motion is reported again after initial trigger.

**Values:** 15 - 255 where 15 stands for 15 seconds and 255 stands for 255 seconds. Default set to 15 seconds.

**Size:** 1 byte dec.

NOTE: Small interval will increase activity and decrease battery life.

**Parameter 6:** Use it to adjust PIR sensor sensitivity.

**Values:** 1 - 7, where 1 = very high sensitivity and 7 = very low sensitivity.

Default set to 3.

**Size:** 1 byte dec.

#### LED notifications

LED indicator will flash whenever you press the Z-Wave button to indicate temperature level and wake-up mode.

#### How to read LED indicator colors?

Green = under 60°F

Blue = 60°-75°F

Yellow = 75°-83°F

Purple = 83°-97°F

**Red** = over 97°F / motion detected / tamper switch triggered

**Flashing red** = low battery

**Parameter 7:** Use it to choose between LED indicator modes.

**Mode 1** = LED indicator is turned off (no visual notifications).

**Mode 2** = temperature indicated with pulsing light. Motion indicated with flashing light.

**Mode 3** = temperature and motion indicated with flashing light. Flashes every 3 minutes for temperature.

**Mode 4** = no indication for temperature, motion indicated with flashing light.

**Values:** 1 - 4. Default set to 4.

**Size:** 1 byte dec.

**NOTE:** Mode 2 will increase activity and decrease battery life.

#### Tamper Switch

Tamper switch is located to the left of the battery slot. It's activated whenever the sensor's cover is removed while the device is powered up. It will send an alarm notification as scheduled.

This device requires the following **command classes** to be supported and recognized by your Z-Wave controller:

COMMAND\_CLASS\_ASSOCIATION\_GRP\_INFO

COMMAND\_CLASS\_ASSOCIATION\_V2

COMMAND\_CLASS\_BATTERY

COMMAND\_CLASS\_CONFIGURATION

COMMAND\_CLASS\_DEVICE\_RESET\_LOCALLY

COMMAND\_CLASS\_FIRMWARE\_UPDATE\_MD\_V2

COMMAND\_CLASS\_MANUFACTURER\_SPECIFIC\_V2

COMMAND\_CLASS\_NOTIFICATION\_V4

COMMAND\_CLASS\_POWERLEVEL

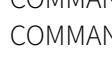
COMMAND\_CLASS\_SECURITY

COMMAND\_CLASS\_SENSOR\_MULTILEVEL\_V7

COMMAND\_CLASS\_VERSION\_V2

COMMAND\_CLASS\_WAKE\_UP\_V2

COMMAND\_CLASS\_ZWAVEPLUS\_INFO\_V2



This product can be included and operated in any Z-Wave network with other Z-Wave certified devices from other manufacturers and/or other applications. All non-battery operated nodes within the network will act as repeaters regardless of vendor to increase reliability of the network.

## WARRANTY

This product is covered under a 12-month limited warranty. To read the full warranty policy or file a warranty claim, please go to

[www.getzooz.com/warranty](http://www.getzooz.com/warranty)

IN NO EVENT SHALL ZOOZ OR ITS SUBSIDIARIES AND AFFILIATES BE LIABLE FOR ANY INDIRECT, INCIDENTAL, PUNITIVE, SPECIAL, OR CONSEQUENTIAL DAMAGES, OR DAMAGES FOR LOSS OF PROFITS, REVENUE, OR USE INCURRED BY CUSTOMER OR ANY THIRD PARTY, WHETHER IN AN ACTION IN CONTRACT, OR OTHERWISE EVEN IF ADVISED OF THE POSSIBILITY OF SUCH DAMAGES. ZOOZ'S LIABILITY AND CUSTOMER'S EXCLUSIVE REMEDY FOR ANY CAUSE OF ACTION ARISING IN CONNECTION WITH THIS AGREEMENT OR THE SALE OR USE OF THE PRODUCTS, WHETHER BASED ON NEGLIGENCE, STRICT LIABILITY, BREACH OF WARRANTY, BREACH OF AGREEMENT, OR EQUITABLE PRINCIPLES, IS EXPRESSLY LIMITED TO, AT ZOOZ'S OPTION, REPLACEMENT OF, OR REPAYMENT OF THE PURCHASE PRICE FOR THAT PORTION OF PRODUCTS WITH RESPECT TO WHICH DAMAGES ARE CLAIMED. ALL CLAIMS OF ANY KIND ARISING IN CONNECTION WITH THIS AGREEMENT OR THE SALE OR USE OF PRODUCTS SHALL BE DEEMED WAIVED UNLESS MADE IN WRITING WITHIN THIRTY (30) DAYS FROM ZOOZ'S DELIVERY, OR THE DATE FIXED FOR DELIVERY IN THE EVENT OF NONDELIVERY.

#### FCC NOTE

THE MANUFACTURER IS NOT RESPONSIBLE FOR ANY RADIO OR TV INTERFERENCE CAUSED BY UNAUTHORIZED MODIFICATIONS TO THIS EQUIPMENT. SUCH MODIFICATIONS COULD VOID THE USER'S AUTHORITY TO OPERATE THE EQUIPMENT. STORE INDOORS WHEN NOT IN USE. SUITABLE FOR DRY LOCATIONS ONLY. DO NOT IMMERSE IN WATER. NOT FOR USE WHERE DIRECTLY EXPOSED TO WATER.

This device complies with Part 15 of the FCC Rules.

Operation is subject to the following conditions:

1. This device may not cause harmful interference,
2. This device must accept any interference received, including interference that may cause undesired operation.

This equipment has been tested and found to comply with the limits for a Class B digital device, pursuant to part 15 of the FCC Rules.

These limits are designed to provide reasonable protection against harmful interference in a residential installation.

This equipment generates, uses and can radiate radio frequency energy and, if not installed and used according to instructions, may cause harmful interference to radio communications.

However, there is no guarantee that interference will not occur in any given installation. If this equipment causes harmful interference to radio or television reception, the user may try to correct the interference by taking one or more of the following measures:

- Reorient or relocate receiving antenna
- Increase the separation between equipment and receiver
- Connect equipment into a separate outlet or circuit from receiver
- Consult the dealer or an experienced radio/TV technician for additional assistance

All brand names displayed are trademarks of their respective holders.

© Zooz 2018